

# ROOM

WWW.ROOMONLINE.COM



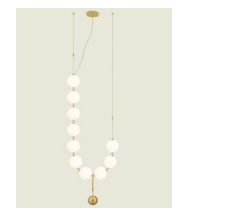
O1



O2



O3



O4



XS-O1



XS-O2

## COCO CHANDELIER

ONE DESIGN, CREATED TO BE HUNG IN FOUR DIFFERENT CONFIGURATIONS

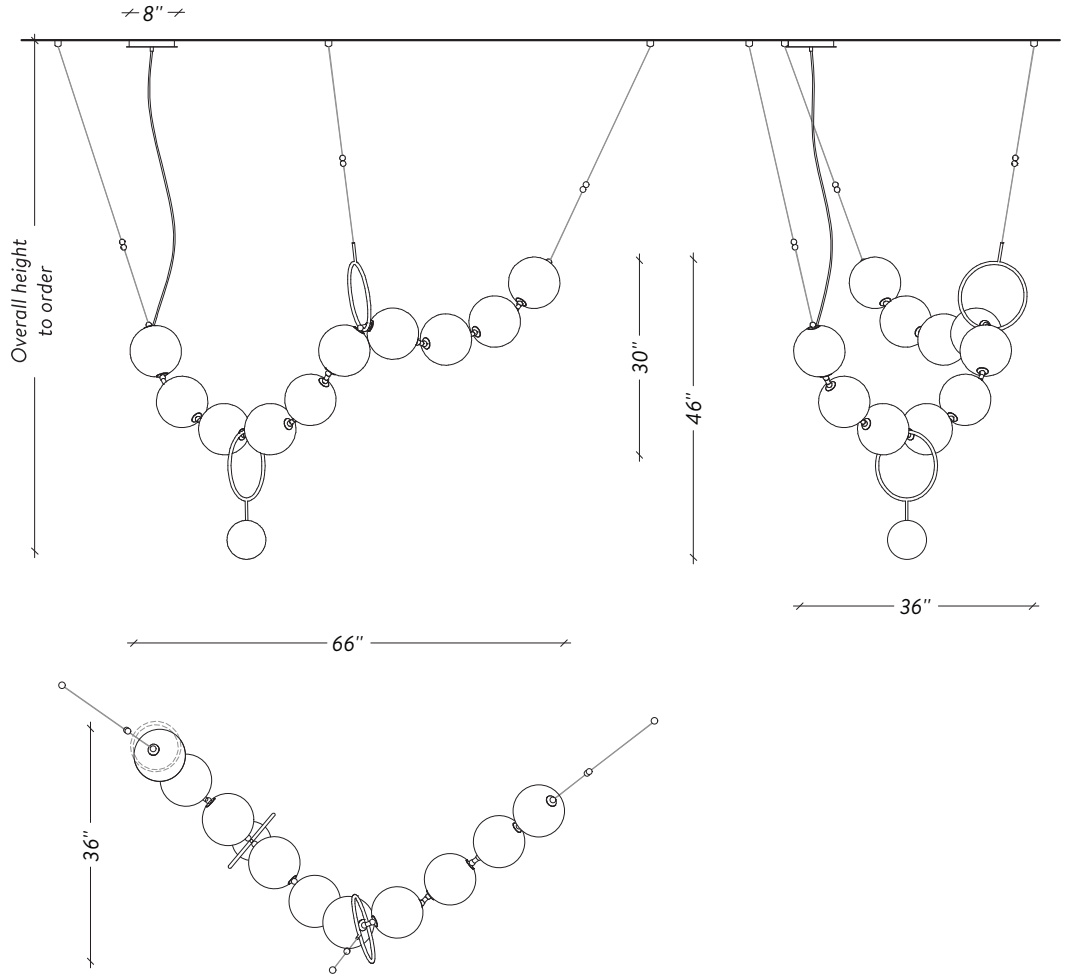
MATERIALS: METAL (SEVERAL FINISHES AVAILABLE) MOUTH-BLOWN GLASS

LAMPING: DIMMABLE LED 2700K (DIM-TO-WARM 2200K TO 2700K), 2880 LUMENS, 40W PER GLOBE

ITEM NO. LI289

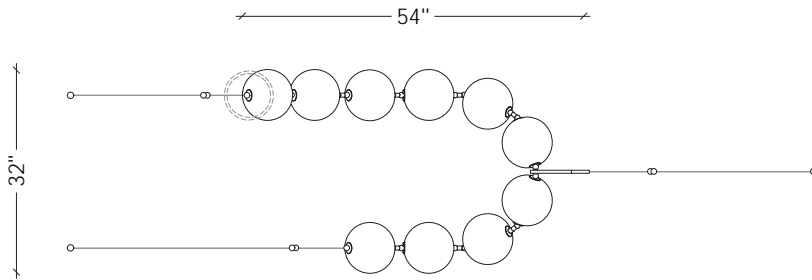
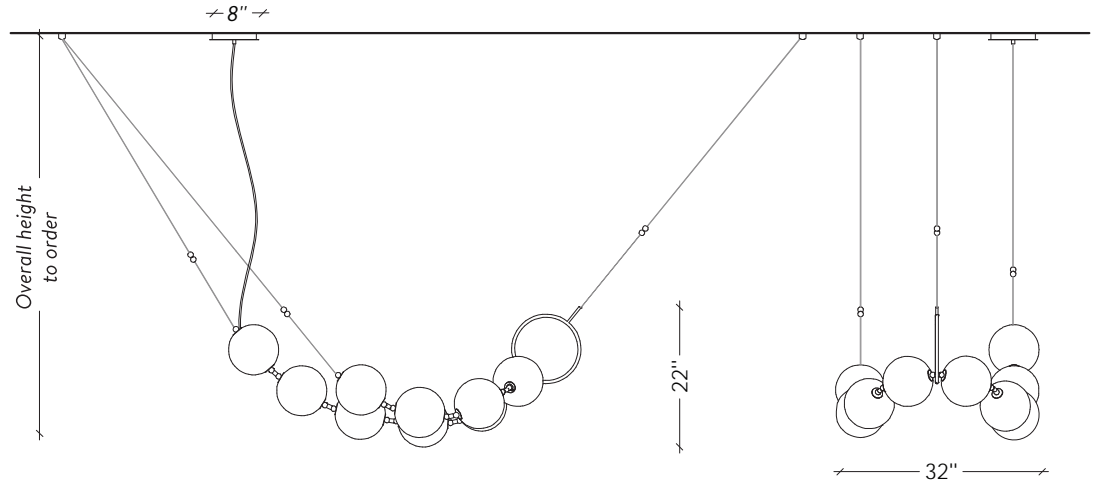
# COCO

## CONFIGURATION 01



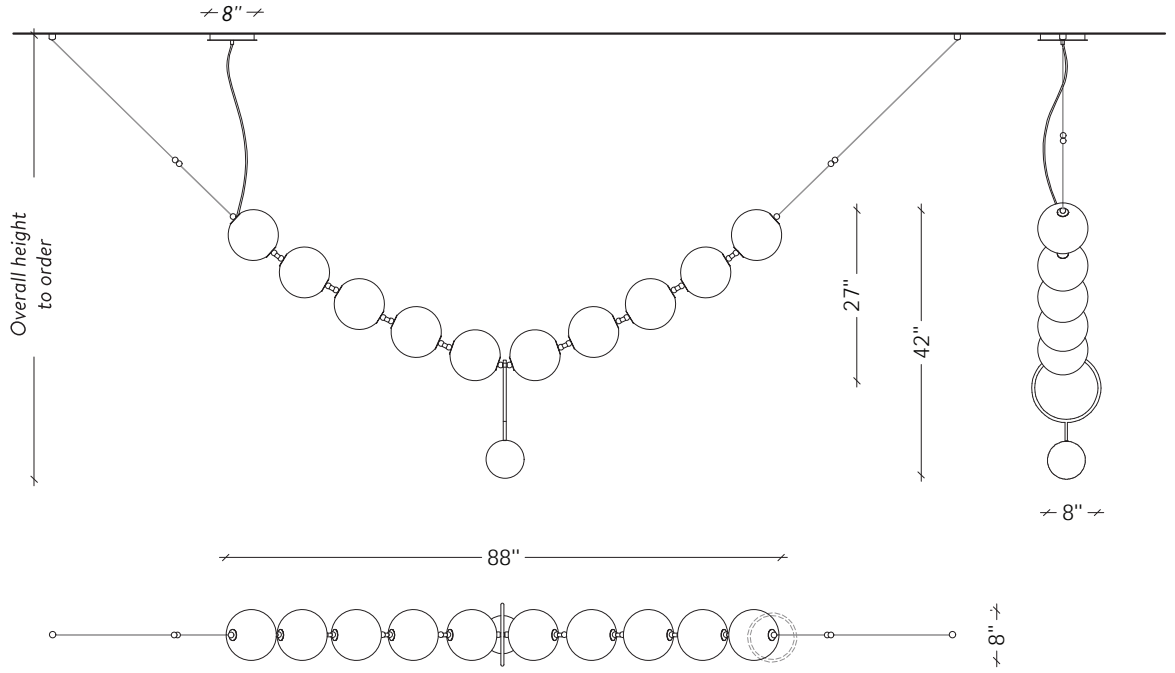
# COCO

## CONFIGURATION 02



# COCO

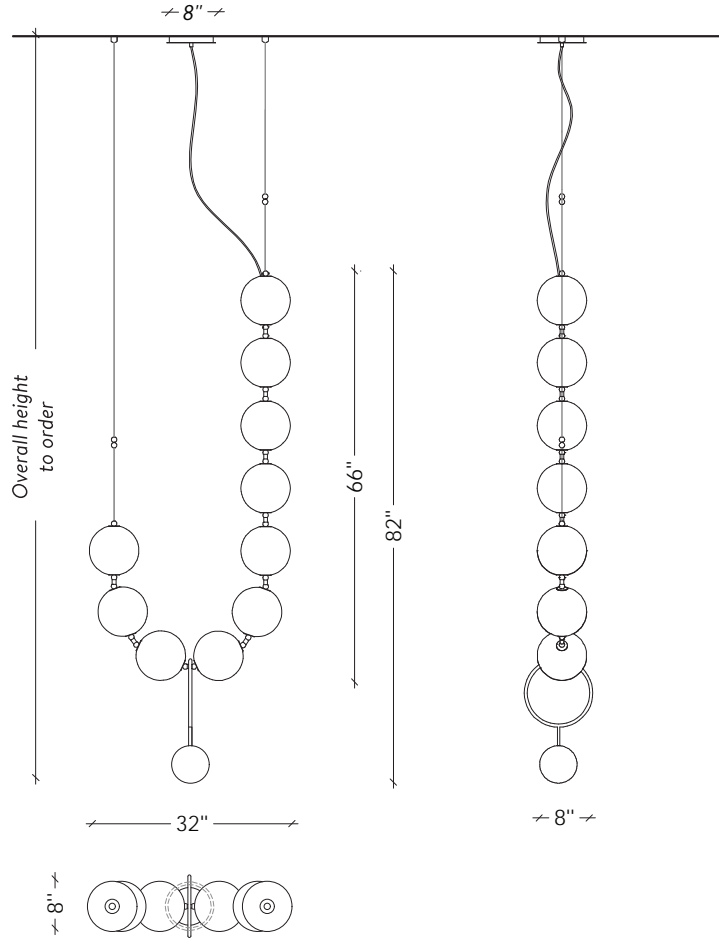
## CONFIGURATION 03



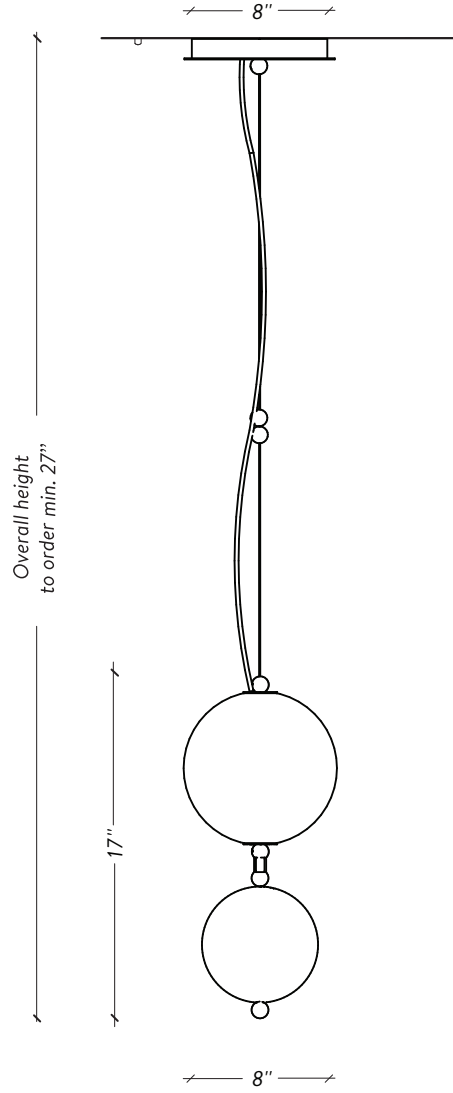


# COCO

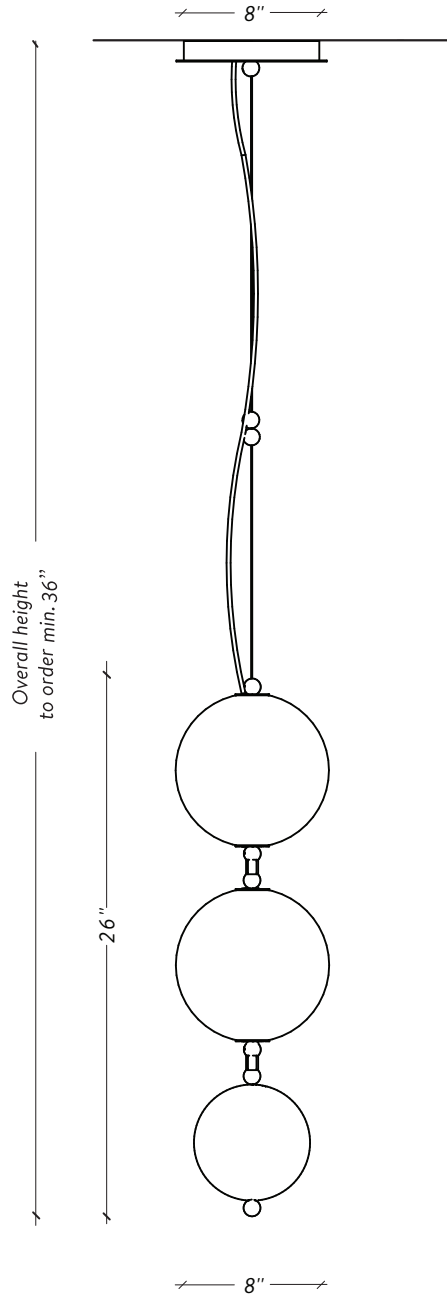
## CONFIGURATION 04



# COCO XS-01



# COCO XS-02



# SPÉCIFICATIONS

## DIMENSIONS

Configuration 01

66" x 36" x 46" H - 35 lbs

Configuration 02

54" x 32" x 22" H - 35 lbs

Configuration 03

88" x 8" x 42" H - 35 lbs

Configuration 04

32" x 8" x 82" H - 35 lbs

## LEAD TIME / DÉLAIS DE PRODUCTION

12 - 14 weeks / 12 - 14 semaines

## CERTIFICATION

UL listed for Canada and USA

Certifié UL pour le Canada et E-U



## CABLES

Not adjustable / Overall length to order

Non ajustable / Longueur totale à la commande

## SHADE / DIFFUSEUR

8" Hand blown glass ball

Globe 8" de verre soufflé à la main

## SOURCE

Dimmable LED / DEL dimmable

120V / 0-10V Upon Request Sur demande

2700K (Dim-to-Warm 2200K to 2700K)

2 880 Lumens - 40 W - 50 000h

## COMPATIBLE DIMMER LIST/

### LISTE DE GRADATEUR COMPATIBLE

Lutron	DVCL-153P *Recommended
Leviton	IPI06-1LZ
Leviton	6631-2
Lutron	S-603PG
Lutron	DV-600P
Lutron	TGCL-153P
Lutron	S-600P
Leviton	VPE06

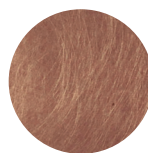
## FINISHE TO ORDER / FINIS À COMMANDER



Aged Brass  
Laiton Antique



Aged Bronze  
Bronze Antique



Aged Copper  
Cuivre Antique



Satin Nickel  
Nickel Satiné



Satin Black  
Noir Satiné



Alabaster White glass  
Verre Blanc Albâtre