

# ROOM

WWW.ROOMONLINE.COM

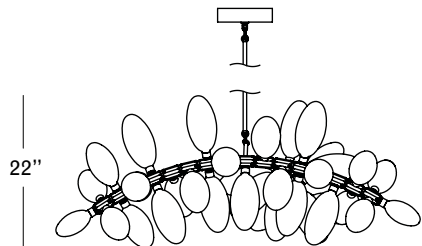


Black  
Clear Glass With Large Pods

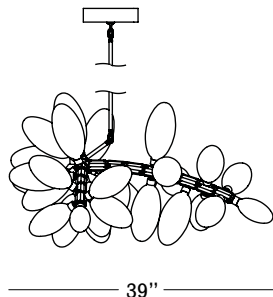
# ROOM

WWW.ROOMONLINE.COM

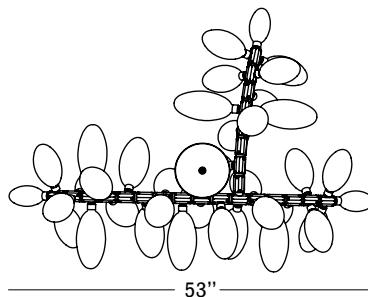
Front



Side



Top



## Finishes



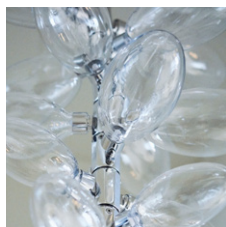
**Black**  
\$18,000  
16 weeks



**German Silver**  
\$18,000  
16 weeks



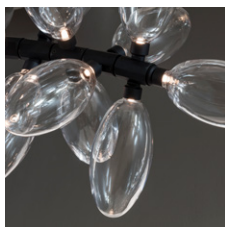
**Brushed Brass**  
\$18,000  
16 weeks



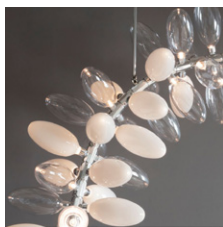
**Polished Aluminum**  
\$21,600  
16 weeks



**White Glass**



**Clear Glass**



**Mixed Glass**

## Specifications

Height: 22in / 58cm  
Depth: 39in / 99cm  
Width: 53in / 135cm  
Weight: 25lb / 11kg  
Max Wattage: 44w  
Minimum Drop: 30in / 76cm  
Shown with tapered pods

Suspension: Ships with adjustable 36" or 72" stem cut to length on site  
Canopy: Ø 9.5" X 2" with hang straight  
Materials: Machined aluminum, glass  
Bulbs: G4|12V|1.2W|2700K Bi-Pin LED, Dimmable, transformer provided



UL, cUL (120V), CE, CB (240V) Certified

## Inspiration

The inspiration for the versatile lighting system came from the natural drape and growth patterns of the Burro's Tail plant. Each component of the spine is machined from solid aluminum and when assembled, fully articulates within its self-regulated range of motion, creating a rational curvature. The glass shades are mold-blown by hand and illuminated by LEDs.

Designed by Karl Zahn for Lindsey Adelman Studio.