

ROOM

WWW.ROOMONLINE.COM



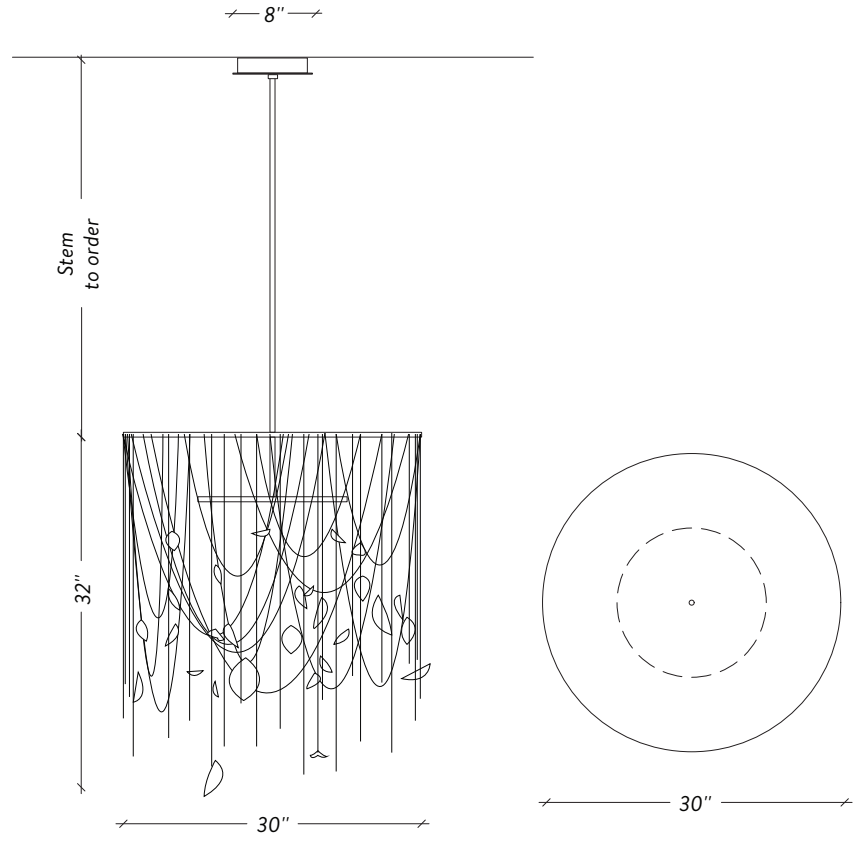
CELESTE D'AUTOMNE

30" D X 32" H FIXTURE HEIGHT

AVAILABLE IN AGED BRASS, AGED BRONZE, AGED COPPER, TARNISHED NICKEL

DIMMABLE LED, 120V / 0-10V UPON REQUEST, (DIM-TO-WARM 2200K TO 2700K)

CÉLESTE D'AUTOMNE



SPÉCIFICATIONS

DIMENSIONS

30" x 30" x 32" H / 25 lb

STEM TO ORDER / TIGE À COMMANDER

12", 18", 24", 30" or 36"

Up-charge applies for additional lengths
Frais additionnels pour les longueurs supplémentaires

SOURCE

Dimmable LED / DEL dimmable
120V / 0-10V Upon Request *Sur demande*
2700K (Dim-to-Warm 2200K to 2700K)
2 600 Lumens - 40 W - 50 000h

CERTIFICATION

UL listed for Canada and USA
Certifié UL pour le Canada et E-U



COMPATIBLE DIMMER LIST/ LISTE DE GRADATEUR COMPATIBLE

Lutron	DVCL-153P *Recommended
Leviton	IP106-1LZ
Leviton	6631-2
Lutron	S-603PG
Lutron	DV-600P
Lutron	TGCL-153P
Lutron	S-600P
Leviton	VPE06

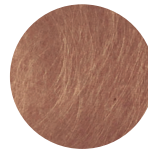
FINISHE TO ORDER / FINIS À COMMANDER



Aged Brass
Laiton Antique



Aged Bronze
Bronze Antique



Aged Copper
Cuivre Antique



Tarnished Nickel
Nickel Terni



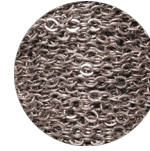
Aged Brass
Laiton Antique



Aged Bronze
Bronze Antique



Aged Copper
Cuivre Antique



Satin Nickel
Nickel Satiné